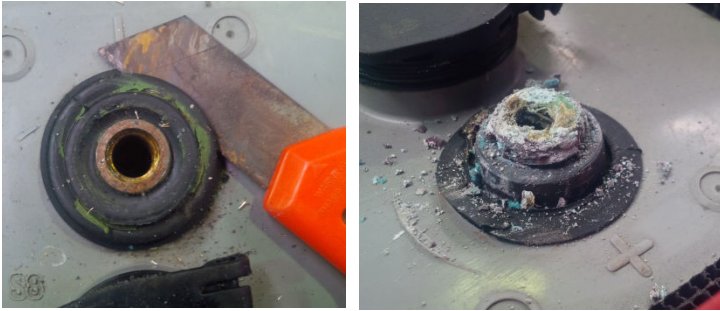


## Terminal Cleaning

Appropriate PPE must be worn (safety glasses, gloves etc)

Check for corroded post. Clean away any loose corrosion with clean cloth / vacuum, Disconnect connector.

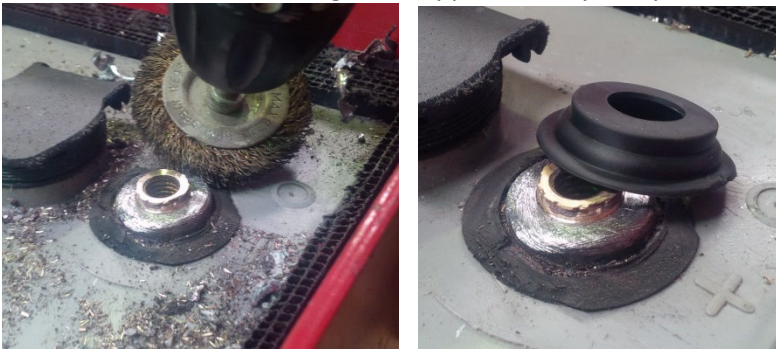
Use cutter to cut away rubber cap level with the top of the cell.



Polish/clean the side of the lead pillar and the side of the brass insert to remove any remaining corrosion, Use wire brush/wheel or sandpaper.

Clean up the repaired terminal with a clean brush / cloth / vacuum.

If battery has any acid soaked dirt accumulation of grime that fails to wash off, the battery tops should be cleaned with a solution of water and baking soda (approximately one part baking soda to 40 parts of water)



Use Battery Grease to full the inside of new rubber grommet and put a covering around the outside of the terminal post.



Place the grommet cap on the terminal and clean away any excess grease that may be squeezed out.

Lightly grease top of grommet and both side of the connector and bolt down, clean away any excess grease that may be squeezed out.

